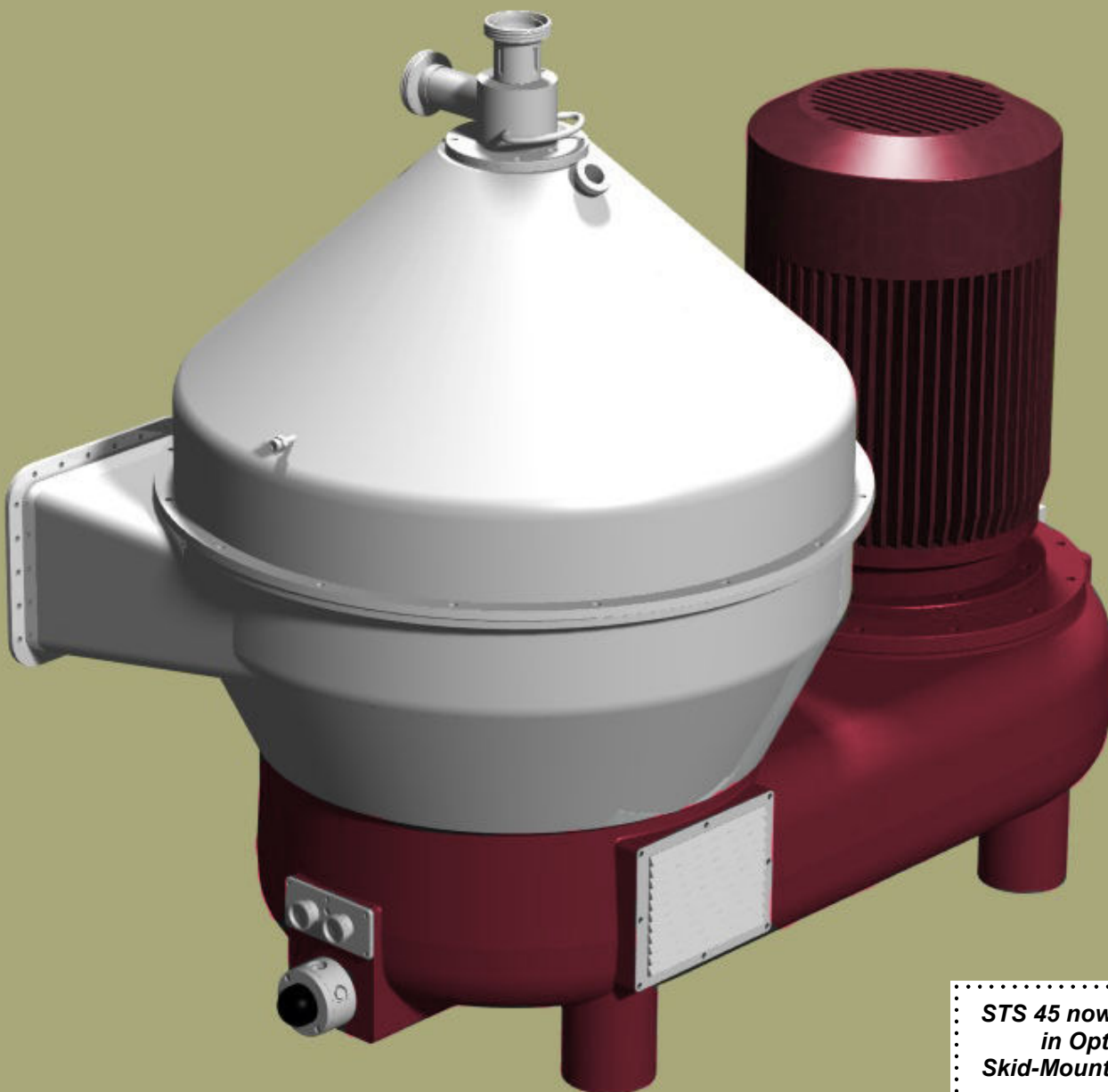


# STS 45

## High Performance Clarifier Self-Cleaning Disk-Type Centrifuge



*STS 45 now Available  
in Optional  
Skid-Mounted Design*

***Highest Performance ... Proven Design***

## Technical Features:

- High-speed ejection system
- Liquid hermetic seal
- Gentle / Low shear feed design
- Adjustable ejection volume
- Enclosed solids discharge
- Short spindle + Cushioned drive
- Belt drive

## Monitoring + Control:

- Turbidity-controlled ejections
- Oil flow monitoring + control
- Vibration monitoring + control
- Speed monitoring + control
- Air + Water pressure monitoring + control

## Alternative Designs:

- Skid Mounted System
- Hermetic seal design by mechanical seal (eg sparkling wine applications)
- 3-phase separator design (eg phase separation + solid extraction)

## STS 45 General Specifications:

- Bowl material in EN 1.4418 (\*)
- Other Product contact surfaces in 316 SS (or higher)
- Painted cast frame (optional stainless clad design)
  
- Bowl speed 7,700 rpm (\*)
- 18.5 kW ABB motor (\*)
- Variable Frequency Drive (\*)
- Alan Bradley CPU (\*)
- Alan Bradley Panelview Plus Colour screen (\*)

(\*) Alternatives upon request

## Benefits:

- thick solids discharge + maximum yield
- low oxygen pick-up
- higher clarification efficiency
- optimal ejection performance for application
- lower noise level
- minimises vibrational severity
- low maintenance cost

- determines time for optimal solids ejection

## *Proven Design + User-Friendly Controls = High Performance*



Operator Control System at Distell Group - Bergkelder, Stellenbosch, South Africa

## Performance Capabilities:

### Typical Applications:

- Wine
- Brewing
- Dairy
- Coffee + Tea
- Fruit + Vegetable Juices
- Soy
- Starch
- Wastewater + Environmental

### STS 45 Flow Rates - Typical Applications:

White Wine ex 1st Ferment	8 - 12 m3/hr
Red Wine ex 1st Ferment	6 - 10 m3/hr
Green Beer Clarification	15 - 20 m3/hr
Hot Wort Separation	10 - 14 m3/hr
Lees / Tank Bottoms:	1 - 1.5 m3/hr

Actual capacities are subject to the specific characteristics of the product & installation.



**Skid-Mounted STS 45 for Mobile Service at American Winesecrets, Napa, California, USA**



**Maximum Yield + High Clarification - Delivered**

***Price / Performance that separates the STS 45 from the rest***

## Contact:

### Corporate Head Office:

Separator Technology Solutions Pty Ltd  
Melbourne, Australia

P: +61 3 9923 7367  
F: +61 3 9923 7355  
E: info@sts200.com

W: www.sts200.com

### Licensee:

Matériel PERA  
Florensac, France

P: +33 4 67 77 01 21  
F: +33 4 67 77 00 44  
E: pera@pera.fr

W: www.pera.fr

## International Offices:

### Australia:

#### Sales & Service Office:

Separator Technology Solutions Pty Ltd  
Melbourne, Australia

P: +61 3 9016 4330  
F: +61 3 9923 7355  
E: info@sts200.com

#### Sales Agent:

Australian Beverage Systems Pty Ltd  
McLaren Vale, Australia

P: +61 407 842 244  
F: +61 8 8323 9620  
E: price.geoff@bigpond.com

### North America:

#### Sales & Service Office:

Separator Technology Solutions US Inc  
San Francisco, CA, USA

P: +1 559 253 3699  
F: +1 760 406 4849  
E: info@sts200.com

#### Sales Agent:

Winesecrets  
Napa, CA, USA

P: +1 888 656 5553  
F: +1 707 824 7905  
E: eric@winesecrets.com

### South Africa:

#### Sales & Service Office:

Separator Technology Solutions (SA) Pty Ltd  
Stellenbosch, South Africa

P: +27 73 443 6257  
F: +27 21 852 0388  
E: info@sts200.com

#### Sales Agent:

Wintrust  
Stellenbosch, South Africa

P: +27 21 887 4780  
F: +27 21 887 5839  
E: wintrust@mweb.co.za

## Disclaimers:

This information serves as a non-binding description of our products and capabilities and does not constitute a guarantee of performance.

The STS 45 is supplied by Separator Technology Solutions and its approved local representatives. Any resemblance to, or compatibility of parts with, competitor models is of a functional design nature and strictly should not be misconstrued as having further meaning.